

i100 Elite SR4



Certificate no: 931
LPS1175: Issue 7

Applications

A rolling shutter of the highest available security level, for use on sites such as government premises, police stations, banks, and utilities supply installations. The I100 Elite SR4 has been tested by the Loss Prevention Certification Board LPS1175 (7.0), rated SR4, and awarded 'Secured by Design' status. Internal face fix installation only.

Locking Mechanisms

The I100 incorporates a bullet locking system situated approx. 1m from ground level, fixed to each guide channel; reinforcement bars through the walls of the slat; transverse ground locking system on shutters over 3 metres wide.

Curtain Slat

Double skin mild steel insulated slat with 81mm face. Wall thickness 1.2mm. Insulation is available for the i100 SR3 but not the i100 SR4 - see Datasheet 32.

Finish: Galvanised as standard, powder coating and plastisol finishes available on request.

Visible Face: 81mm
Weight per m²: 100kg
Maximum Width: 3000mm
Maximum Area: 4m² (tubular), 35m² (outboard)
Slat U-Value: 1.5 W/m² K

Housing

Galvanised steel housing and end plates.

Finish: Galvanised as standard, powder coating available on request.

Guide Height (mm)	Plate Size (mm)	Motor
1750	400	Tubular / Outboard
2500	450	Tubular / Outboard
3250	500	Outboard
4000	550	Outboard
5000	600	Outboard

Plate sizes shown as a guide only and may vary. Note: outboard motors are generally larger than the plate itself.

Bottom Slat

Galvanised steel bottom slat with weather seal.

Guide Channels

85mm wind guides as standard. Guide channels are bolted onto 100x50x6mm angle. See drawings opposite.

Operation

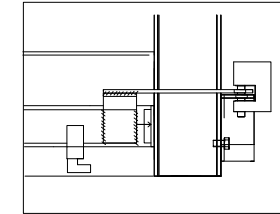
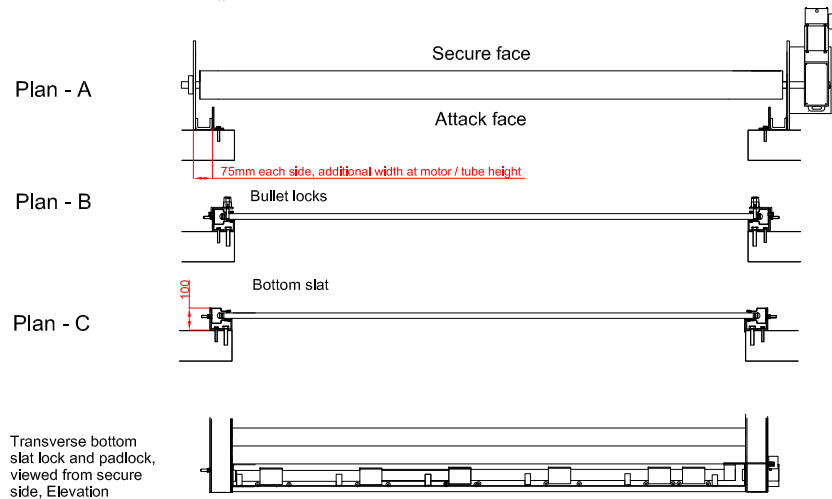
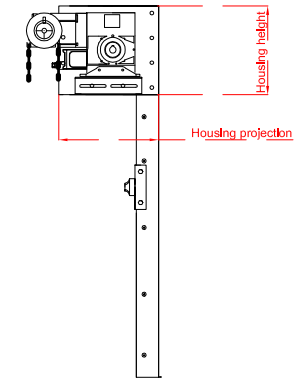
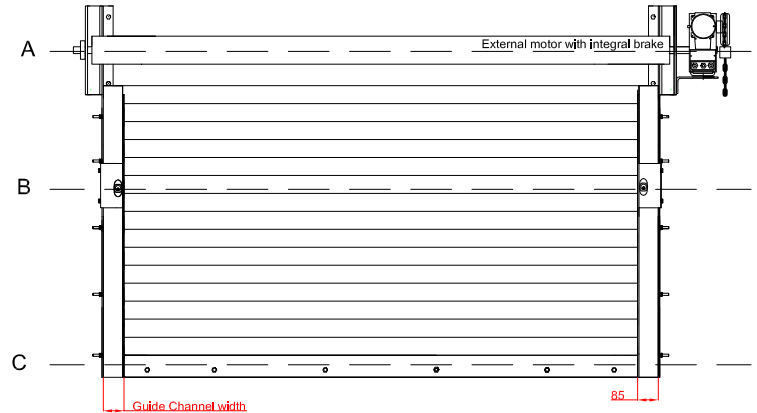
Electric, Tubular: Tubular motor & internal rocker or external key switch as standard. Safety brake as appropriate to comply with legislation. Manual override facility & crank handle as required. Numerous control option variants such as group or mobile phone activation.

Electric, Outboard: Three phase motor with push button control station as standard. Motors can be direct drive, chain drive or inline design. Final configuration will be project specific but all motors incorporate a chain manual override facility. Numerous control option variants such as timed closure, group or mobile phone activation.

CE compliant to all applicable directives and regulations.

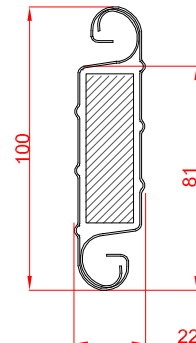
Front Face & Fixing Detail

Viewed from secure side (internal)

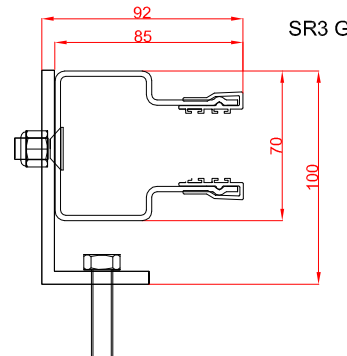


Transverse bottom slat lock and padlock, for shutters with width greater than 3 metres (viewed from secure side)

Slat Profile



Guide Channel With Angle



Unit 12, Artillery Business Park, Garrison Avenue,
Park Hall, Oswestry, Shropshire SY11 4AD
Phone: 01691 679257 | www.aluroll.co.uk